

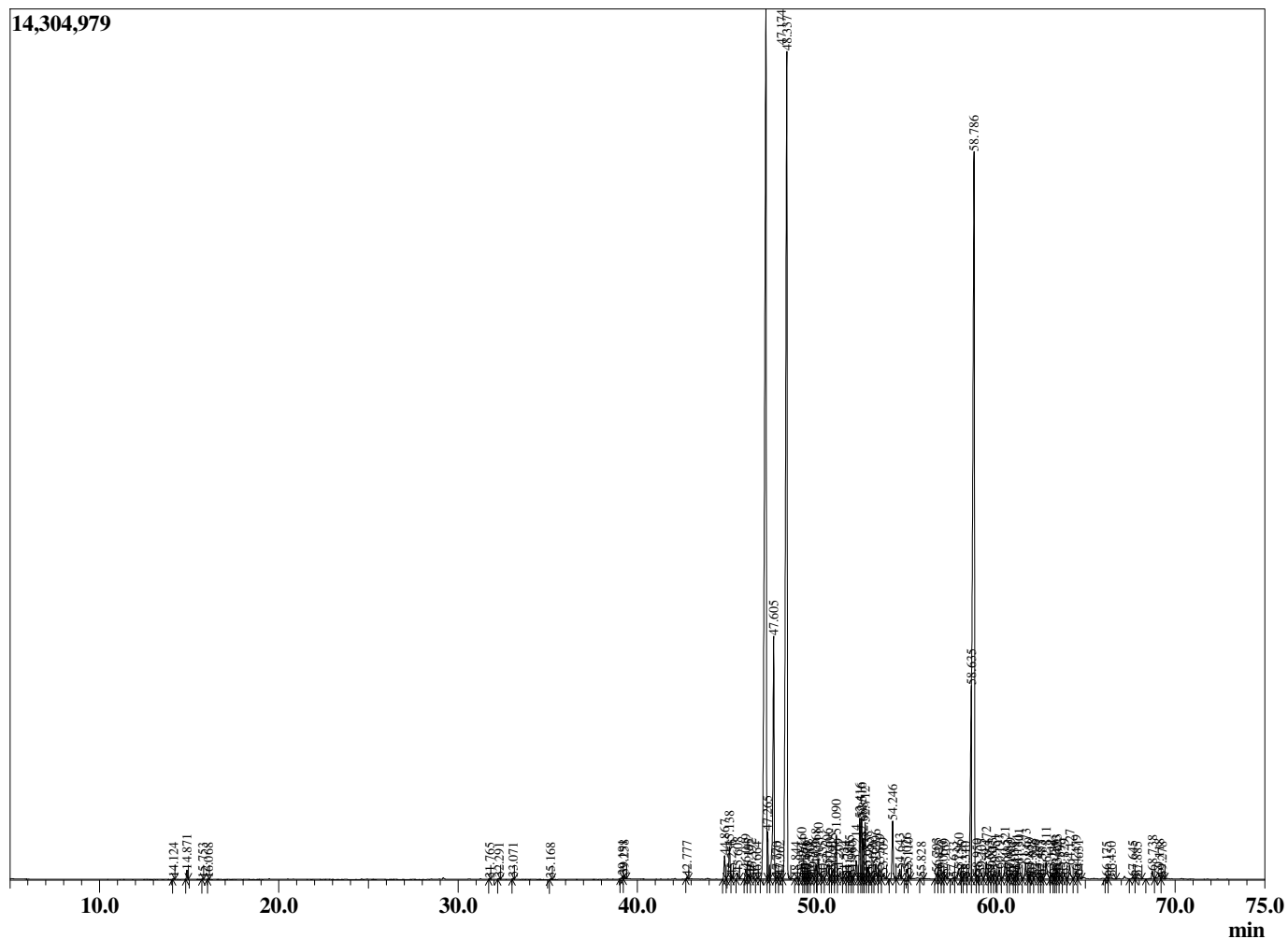
Sample Information

Sample Type : Essential Oil  
 Sample Name : Juniperus mexicana

Cedarwood Texas  
 Lot# USZ24-ZC  
 Country: USA



Chromatogram Juniperus mexicana



R.Time	Name	Area%
14.124	Unidentified	0.01
14.871	alpha-Pinene	0.13
15.753	alpha-Fenchene	0.01
16.068	Unidentified	0.01
31.765	alpha-Terpineol	0.01
32.291	Myrtenal	0.02
33.071	Verbenone	0.01
35.168	Thymol Methyl Ether	0.01
39.191	Unidentified	0.06
39.258	Unidentified	0.07
42.777	Unidentified	0.04
44.867	Isoitalicene	0.45
45.138	alpha-Duprezianene	0.77
45.256	beta-Elemene	0.06
45.608	Unidentified	0.12
46.049	beta-Longipinene	0.20
46.192	alpha-Funebrene	0.10
46.392	di-epi-alpha-Cedrene	0.08
46.664	Unidentified	0.02
47.174	alpha-Cedrene	26.27
47.265	trans-beta-Caryophyllene	0.82
47.605	beta-Cedrene	5.28
47.770	Unidentified	0.04
47.962	Unidentified	0.06
48.337	cis-Thujopsene	21.63
48.844	Unidentified	0.02
49.160	alpha-Himachalene	0.36
49.264	Prezizaene	0.11
49.376	Unidentified	0.06
49.475	alpha-Humulene	0.03
49.581	Unidentified	0.04
49.798	Unidentified	0.10
49.968	alpha-Acoradiene	0.29
50.110	beta-Acoradiene	0.48
50.335	Unidentified	0.08
50.606	10-epi-beta-Acoradiene	0.51
50.740	alpha-Cuprenene	0.12
50.915	10-epi-beta-Acoradiene	0.26
51.090	beta-Chamigrene	0.87
51.209	Unidentified	0.15
51.534	beta-Selinene	0.06
51.734	Valencene	0.05
51.855	beta-Alaskene	0.18
51.960	Unidentified	0.07
52.214	beta-Himachalene	0.49
52.416	alpha-Cuprenene	1.20
52.516	Pseudowiddrene	1.28
52.608	alpha-Chamigrene	0.70
52.712	Cuparene	1.17
52.838	alpha-Alaskene	0.24
52.955	Cuprenene isomer	0.13
53.160	Unidentified	0.04
53.296	Unidentified	0.34
53.529	Unidentified	0.22
53.709	(E)-gamma-Bisabolene	0.14
54.246	gamma-Cuprenene	1.18

R.Time	Name	Area%
54.643	Viridiflorol	0.22
55.026	delta-Cuprenene	0.26
55.110	Unidentified	0.07
55.828	Unidentified	0.03
56.703	Unidentified	0.12
56.825	Unidentified	0.08
57.050	Caryophyllene oxide	0.02
57.169	Unidentified	0.09
57.633	Unidentified	0.03
57.960	Funebrol	0.40
58.126	Unidentified	0.04
58.310	Unidentified	0.08
58.635	Widdrol	3.19
58.786	Cedrol	21.74
58.950	Unidentified	0.10
59.205	Unidentified	0.17
59.472	Epicedrol	0.43
59.653	1-epi-Cubenol	0.06
59.813	Unidentified	0.13
59.951	alpha-Acorenol	0.23
60.197	beta-Acorenol	0.25
60.521	Unidentified	0.44
60.683	Unidentified	0.09
60.819	Unidentified	0.15
61.033	Unidentified	0.05
61.181	Unidentified	0.20
61.301	Unidentified	0.41
61.673	Unidentified	0.42
61.850	Unidentified	0.12
62.028	beta-Bisabolol	0.19
62.206	(Z)-alpha-Santalol	0.14
62.453	Unidentified	0.07
62.583	Unidentified	0.07
62.811	alpha-Bisabolol	0.55
63.111	Khusian-2-ol	0.11
63.236	Unidentified	0.06
63.353	Unidentified	0.14
63.423	Unidentified	0.19
63.593	Unidentified	0.12
63.829	Unidentified	0.13
64.127	14-Hydroxy-9-epi-Z-Caryophyllene	0.37
64.479	Unidentified	0.22
64.631	Unidentified	0.08
66.175	Khusimol	0.05
66.450	Unidentified	0.09
67.645	Unidentified	0.06
67.885	Unidentified	0.07
68.738	Unidentified	0.22
69.118	Nootkatone	0.18
69.278	Unidentified	0.04
		100.00